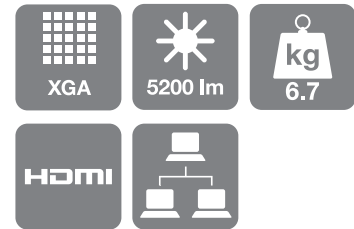


Epson EB-G5900/NL

DATASHEET



This best-in-class projector is designed and built to meet the exacting requirements of large venue installation.

Designed for large education and corporate venues, the projector has an equally high White and Colour Light Output (CLO) thanks to Epson's 3LCD technology. This means presentations have vivid yet natural colours even in full daylight.

Product durability is assured and TCO kept to a minimum with the addition of the long-life C²Fine Inorganic LCD panel and long-lasting lamp. And for low maintenance, the electrostatic filter can be cleaned or changed quickly. It's also environmentally-friendly, with a paint-free design, lead-free lenses, and recyclable packaging.

The projector is available in two models: the EB-G5900 which comes with the Standard Lens, and the EB-G5900NL which comes without a lens. Five optional lenses are available, allowing you to create the perfect projector to suit particular venues and different types of multimedia content.

KEY FEATURES

- 3LCD for outstanding picture quality
- 5,200 lumens for bright daylight viewing
- Lens shift
- Straightforward installation and operation
- Low maintenance with long-lasting lamp



PRODUCT SPECIFICATIONS

PROJECTION TECHNOLOGY	3LCD Technology 0.8-inch with MLA
RESOLUTION	XGA – 1024 x 768 (4:3 aspect ratio) Up to 1080p
WHITE LIGHT OUTPUT * Normal / Eco	5200 / 4160 Lumens
COLOUR LIGHT OUTPUT * Normal / Eco	5200 / 4160 Lumens
CONTRAST	1000:1
LAMP Life (Normal / Eco) Type	2000 / 3000 hours 275W UHE
LENS	EB-G5900: standard lens EB-G5900NL: no lens Optional lenses available, see Optional Lens Specifications chart for full details
CONNECTIVITY Video input Audio input Digital input Computer input Control input Computer output Audio output	1 x RCA, 1 x S-Video, 2 x component (via D-sub 15-pin), 1 x HDMI, 1 x 1-BNC 3 x Stereo mini-jack, 1 x RCA (R/L), 1 x HDMI 1 x HDMI 2 x D-sub 15-pin (RGB), 1 x 5-BNC 1 x RJ-45, 1 RS-232C 1 x D-sub 15-pin (RGB) 1 x Stereo mini-jack
ADVANCED FEATURES Security Operation EasyMP features Display	Security cable hole, lens lock, Kensington lock hole, password protection Lens shift, split-screen function, direct power on/off, instant off EasyMP Network & Control 8 colour modes (including DICOM Simulation)
LANGUAGES	English / French / German / Italian / Spanish / Dutch / Portuguese / Danish / Russian / Swedish / Norwegian / Finnish / Polish / Hungarian / Slovenian / Czech / Ukrainian / Romanian / Catalan / Greek / Turkish / Arabic / Japanese / Korean / Traditional Chinese / Simplified Chinese / Thai
NOISE LEVEL Normal / Eco	38dB / 32dB
SOUND	1 x 7W
WEIGHT	6.7kg
DIMENSIONS (W x H x D)	470 x 135 x 311.5mm
POWER CONSUMPTION Normal / Eco Standby	373W / 311W 0.47W
WARRANTY**	2 years on main unit; 1 year on lamp

* ISO 21118 based measurement

** Warranty offers are not available for all countries. Please contact your local Epson representative.

PRODUCT LOGISTICS

PROJECTOR MODEL	EB-G5900	EB-G5900NL
SKU CODE		
BARCODE		
WHAT'S IN THE BOX	Projector Standard lens Power cable Computer cable Remote control and batteries Lens cover Cable cover Lens lock cover Password protect sticker Bundled software User's manual set	Projector Power cable Computer cable Remote control and batteries Lens cover Cable cover Lens lock cover Password protect sticker Bundled software User's manual set
GROSS WEIGHT		
CARTON DIMENSIONS (L x W x H)		

Epson EB-G5900/NL

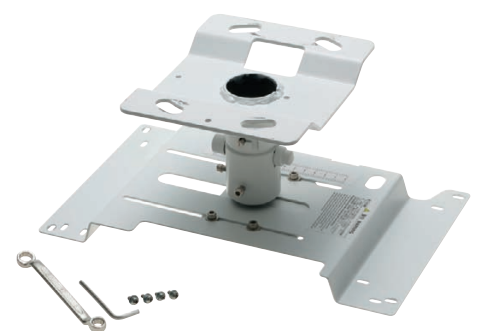
OPTIONAL LENSES

- Standard Lens (ELPLS05)
- Rear Projection Wide Lens (ELPLR03)
- Middle Throw Zoom Lens 1 (ELPLM04)
- Middle Throw Zoom Lens 2 (ELPLM05)
- Long Throw Zoom Lens (ELPLL06)

See *Optional Lens Specifications chart* for full details

OPTIONAL ACCESSORIES

- Spare lamp (ELPLP63)
- Air filter (ELPAF17)
- 80-inch pull-up screen 16:10 (ELPSC24)
- Epson Desktop Visualiser (ELPDC11)
- Epson USB Visualiser (ELPDC06)
- Ceiling mount (ELPMB22)
- Ceiling pipe 668-918mm (ELPFP13)
- Ceiling pipe 918-1168mm (ELPFP14)



Tailor-made ceiling mount for easy installation and security



For further information please contact your local Epson office or visit www.epson-europe.com

Austria 0810/20 01 13 (0,07 €/min) Belgium 070/350120 (0,1735 €/min) Czech 800/142 052 Denmark 44 50 85 85 Finland 0201 552 091 France 09 74 75 04 04 (Cost of local call, operator charges may apply) Germany 01805/23 41 10 (0,14 €/min aus dem dt. Festnetz, Mobilfunkpreise abweichend. Ab 1.3.2010 Mobilfunkpreis max. 0,42 €/min) Greece 210-8099499 Hungary 06800 147 83 Ireland 01 436 7742 Italy 02-660321 10 (0,12 €/min) Luxembourg 900/43010 (0,24 €/min) Middle East +9714 8818934 Netherlands 0900-5050808 (0,05 €/oproep + 0,15 €/min) Norway +47 67 11 37 00 Poland 0-0-800 4911299 (0,16 zł/min) Portugal 707 222 111 Russia (095) 777-03-55 Slovakia 0850 111 429 South Africa (+2711) 465-9621 Spain 93 582 15 00 Sweden 0771-400135 (Mobilsamtal – 0,99 kr/min, Lokala samtal – 0,30 kr/min, Utlandssamtal – 0,89 kr/min) Switzerland 0848 448820 (8 cent./min) Turkey (0212) 3360303 United Kingdom 0871 222 6702

Trademarks and registered trademarks are the property of Seiko Epson Corporation or their respective owners.
Product information is subject to change without prior notice.

EPSON®